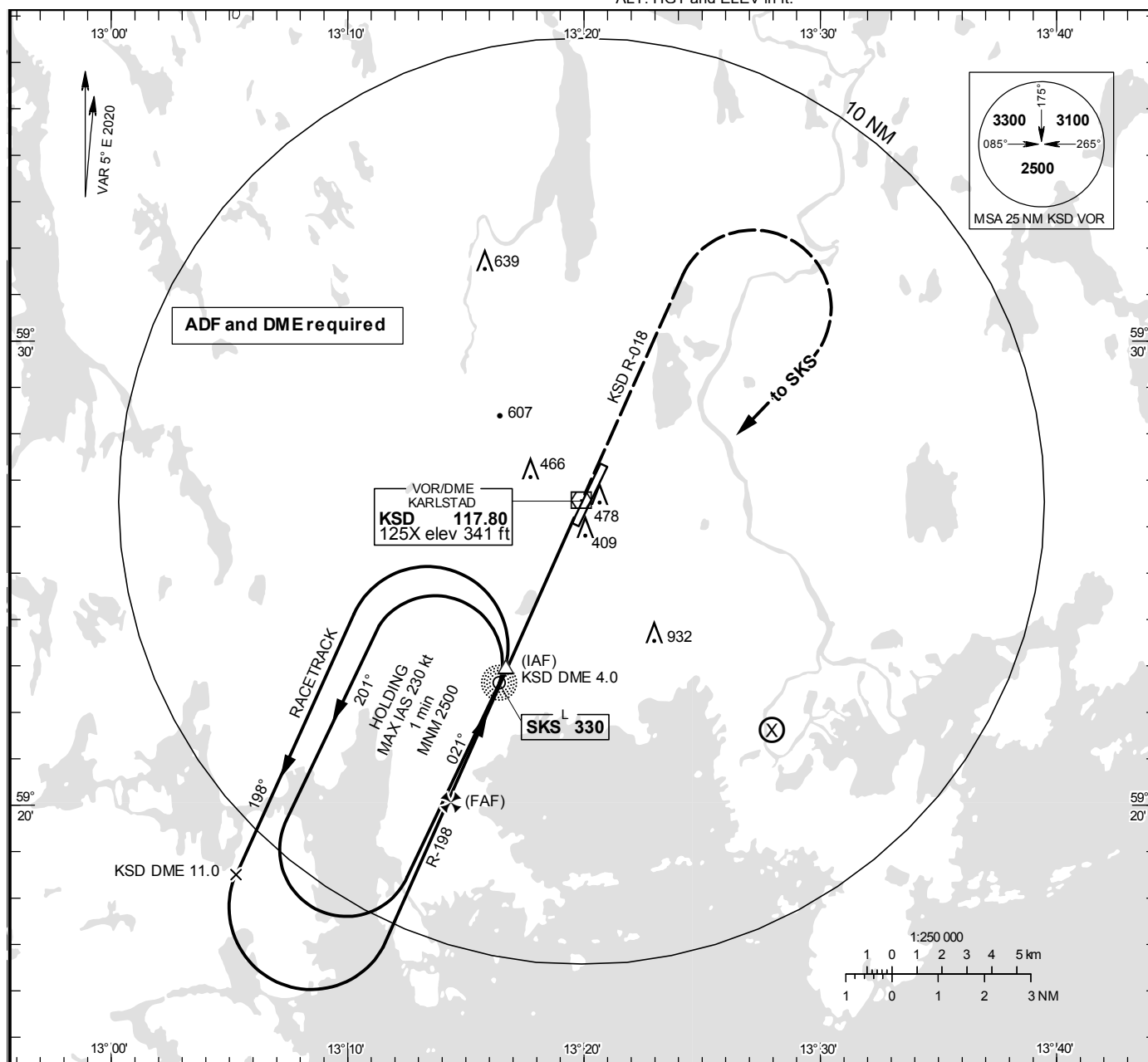


KARLSTAD
VOR RWY 03

KARLSTAD TOWER 119.455

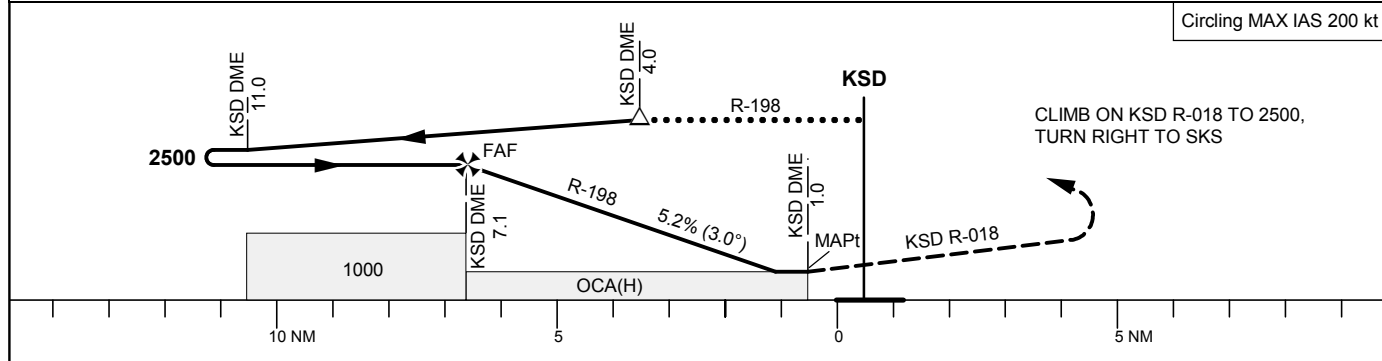
THR ELEV 333.0 ft, AD ELEV 353 ft
OCH are related to THR.
Circling OCH are related to AD ELEV.
BRG are MAG
ALT. HGT and ELEV in ft.

**INSTRUMENT
APPROACH
CHART – ICAO**



TA 5000 ft AMSL Max speed within racetrack 240 kt IAS Final APCH line offset 3° *Timing not authorized for defining the MAPt

Circling MAX IAS 200 kt



OCA (H)					Final approach		Distance FAF-MAPt 6.1 NM*					
Cat of ACFT	A	B	C	D	DME KSD NM		7	6	5	4	3	2
Straight-in Approach	660 (330)				ALT		2460	2140	1820	1510	1190	870
Circling	780(430)	910(560)	1330(980)	1330(980)	GS	Kt	80	100	120	140	160	180
Circling NW RWY	770(420)	910(560)	1010(660)	1040(690)	Time	min:s	4:35	3:40	3:03	2:37	2:17	2:02
					Rate of descent	ft/min	425	530	635	745	850	955

CHANGE: Editorial